

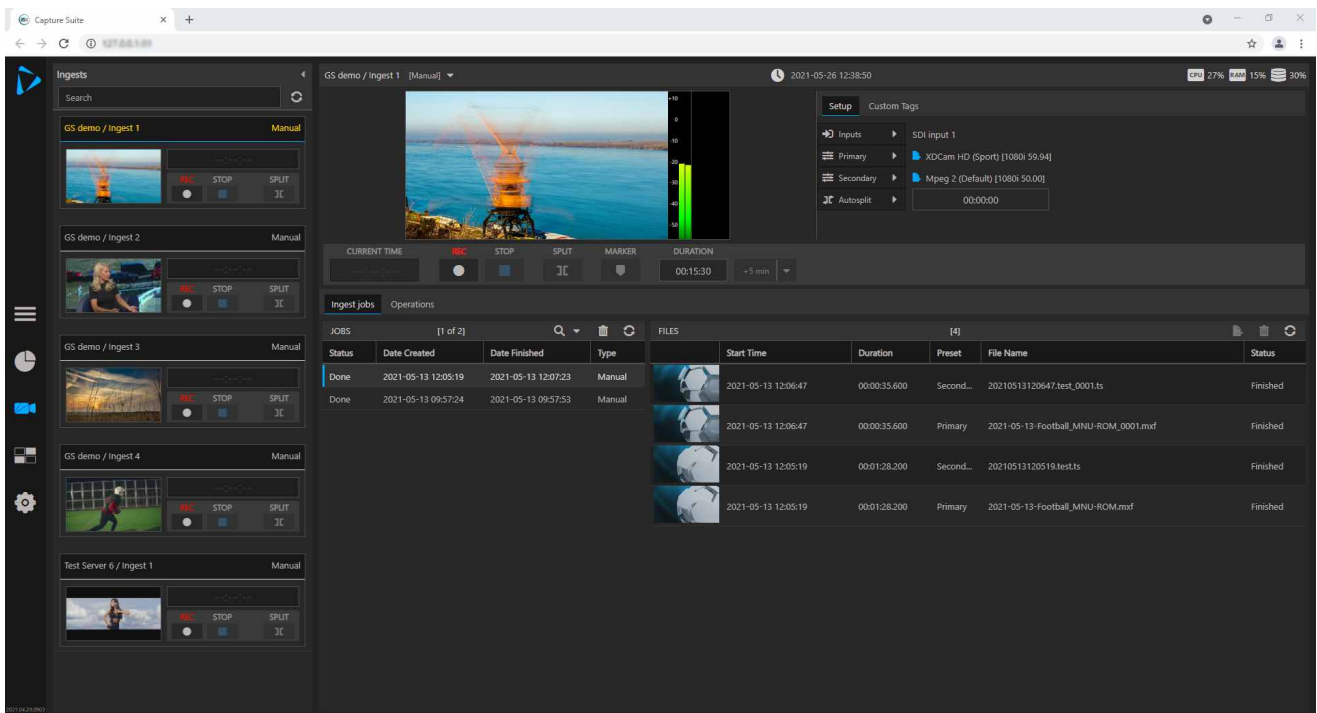
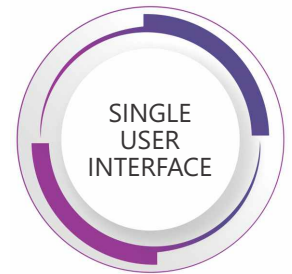


CAPTURE SUITE

Network-based Multi-channel Ingest Solution

In an attempt to ensure a rich viewer's experience, broadcasters and post-production houses have to deal with receiving content from multiple live sources on a daily basis.

Our latest addition Capture Suite is a multi-channel – multi-server UHD/HD/SD live ingest solution which integrates into the production workflow of any television network, post-production facility or playout center.



Capture Suite allows users to control multiple ingest channels, spread on multiple servers from a single web user interface. Functions such as input selection, ingest presets, file naming conventions assignments and auto-transfer functionalities are a single click away from the user.



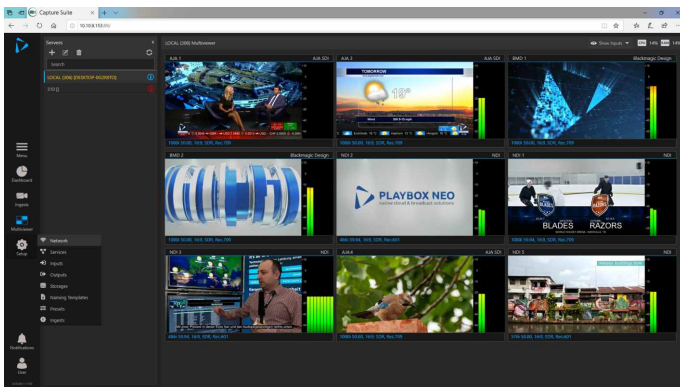
PLAYBOX NEO
native cloud & broadcast solutions

General Sales Contact: sales@playboxneo.com
www.playboxneo.com



Capture Suite Features

- Video standards up to 4K can be ingested
- Ingest up to 16 HD Channels per server (format and codec dependent)
- Industry-standard codecs and containers format are supported
- Manual, Scheduled and Compliance ingest modes with automated input switching
- File Splitting based on the duration
- Built-In Automatic and Manual content transfer/replication of ingested media to another storage/network folder
- Built-In Loudness audio meters for precise audio level fine-tuning
- Built-In Web-based MultiViewer with Black and Freeze frame alarms

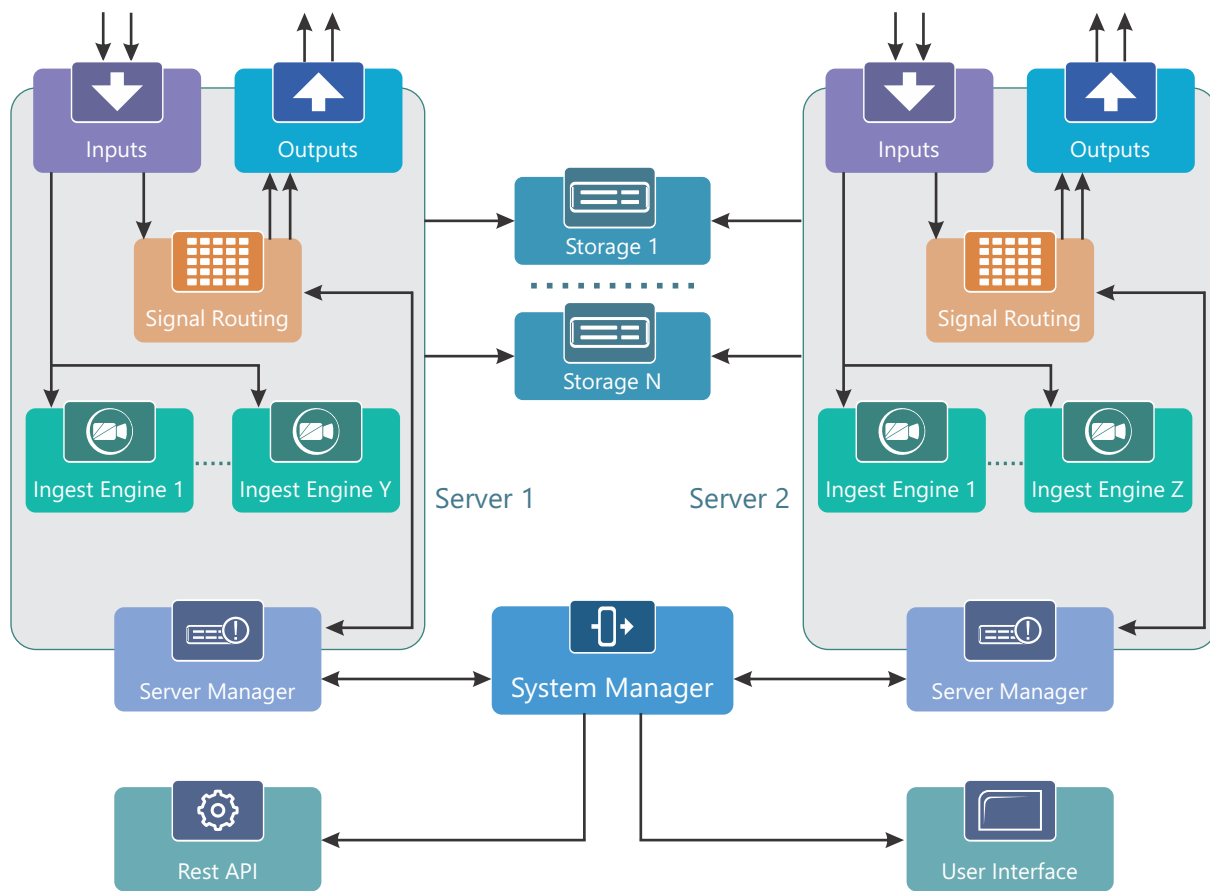


- Increment of ingesting duration while ingesting
- Control multiple servers with multiple ingest channels from a single web user interface
- Possibility to review currently ingested materials using a built-in web player
- Multi-language audio selection and closed captions display is available during ingest
- Adding Clip Markers when navigating over the proxy video while ingesting
- Editing while ingesting in Adobe Premiere and Grass Valley Edius Workgroup 9+
- Playout while ingesting - ingested materials can be used for immediate playout in AirBox Neo-20 Automation before the ingest process is finished (MXF and TS files)
- Up to 2 presets with different resolutions, frame rates and audio mapping per ingesting channel at the same time
- Presets can have different standard (automatic Up/Down/Cross and frame rate conversion) than the original source
- Presets can have different Audio Mapping (number of streams, codecs and bitrates) than the original source
- Overlay Date/Time and TV Channel name per preset
- Scalability – infinite/easy scalability via a client-server architecture
- Custom Naming Template creation for convenient and faster ingest file naming
- Automatic transfers to one or more storages
- Built-In intelligent Resource Monitoring with automatic stopping and saving of all files when the Low Disk/Storage Space alarm is triggered
- External control from AirBox Neo-20 Automation
- Each ingest instance can have a different time zone – for scheduling ingests in multiple time zones
- Http API available
- Export in XMP meta data format





Capture Suite Workflow and Specifications



Supported Codecs & Containers

Apple ProRes MOV*	ProRes 422HQ, ProRes 422, ProRes 422LT, ProRes 422Proxy, ProRes 4444, ProRes 4444XQ
MOV	Avid DNxHD, Avid DNxHR (HQX, HQ, SQ, LB), DV
XDCAM IMX	IMX30,40,50
XDCAM HD	XDCAM HD 1080 4:2:2, XDCAM HD 720 4:2:2
XAVC MXF	XAVC HD Intra CBG - Class 100 & 200, XAVC HD Long GOP - 25, 35, 50Mbps, XAVC 4K Intra CBG - Class 100, 300, 480, XAVC 4K Intra VBR - Class 100, 300, 480
MXF	Avid DNxHD, Avid DNxHR (HQX, HQ, SQ, LB), AVCIntra, DV, H264, MPEG2
Transport Stream	MPEG2, H264, HEVC
Program Stream	MPEG2, H264
QuickTime MP4	H264, HEVC
Closed captions	Embedded ATSC A53 for H264, MPEG2 and HEVC; MCC v.2 file format
Inputs	AJA Covid SDI, BlackMagic Design Decklink, Network Device Interface (NDI)

* Might not be available in some regions

