

PLAYBOX NEO

native cloud & broadcast solutions



Product Presentation

PlayBox Neo – Presentation Agenda

- About Us
- A Selection of our Customers
- A Selection of our Partners
- Proven Solutions
- Media Automation Products
- PlayBox Neo Solutions
- 24/7 Support
- Contact Information

About Us



Building on 26 years of successful innovation, PlayBox Neo Ltd. is advancing its role in the multi-platform future of broadcasting. Having pioneered the development of high-efficiency server-based and cloud-based playout, we are fully geared for today's world in which broadcasting is expanding to support every scale and type of one-to-many communication:

- Tightly themed channels addressing a global audience
- Free Ad-Supported TV Channels (FAST)
- Local channels supporting a specific corporate venue or college campus
- Supplementary OTT channels supporting major sports, stage or studio events
- Linear and on-demand subscription channels
- Free-to-air national channels
- Continent-wide satellite channels in multiple languages

About Us

[PlayBox Neo](#) products and solutions power over 20,000 playout and branding channels worldwide.

Fully scalable, modular, open and available as hardware or as a service, PlayBox Neo solutions are customer-oriented, easy to commission, logical to operate and highly robust. [PlayBox Neo Suite](#) is a professional media platform that enables centralized control, monitoring and administration of a multimedia workflow. PlayBox Neo Suite is a multi-user, multi-server environment that offers an enhanced user experience in a highly cost-effective package. Our server-centric product series is based on the PlayBox Neo [Channel-in-a-Box](#) system ([AirBox Neo](#), [TitleBox Neo](#), [Ingest](#) and [Media Gateway](#)). This turnkey solution integrates seamlessly with PlayBox Neo Suite to optimize your investment and enable a unified interface for future updates.

Flexible connectivity is vital in today's digital world. PlayBox Neo has integrated powerful solutions to scale and fit your workflow at a cost-effective price. Our broadcast product range can deliver and receive a variety of signals including SDI, NDI, DVB/ATSC-compliant streams over UDP, RTP, SRT, Zixi, RIST, receive RTMP and internet radio alike feeds and convert them to standards compliant TS multiplex. Video up/down and cross-conversion up to UltraHD, frame rate conversion and audio channel remapping are also possible. The infrastructure allows us to simulcast in different video standards with different audio mapping in same time on multiple channels.

Our mission at PlayBox Neo is to help individuals, organizations and businesses throughout the world realize their full potential.

About Us

- Commercial Headquarter in Sofia, Bulgaria
- 5 Sales and Support Offices in 5 countries
- PlayBox Neo Sales and Support Offices established in:
 - Bulgaria
 - India
 - Singapore (Asia Pacific)
 - UK
 - USA
- Reseller Network of over 120 Dealers in 100 countries
- Sales to 120+ countries

A Selection of our Customers



A Selection of our Partners



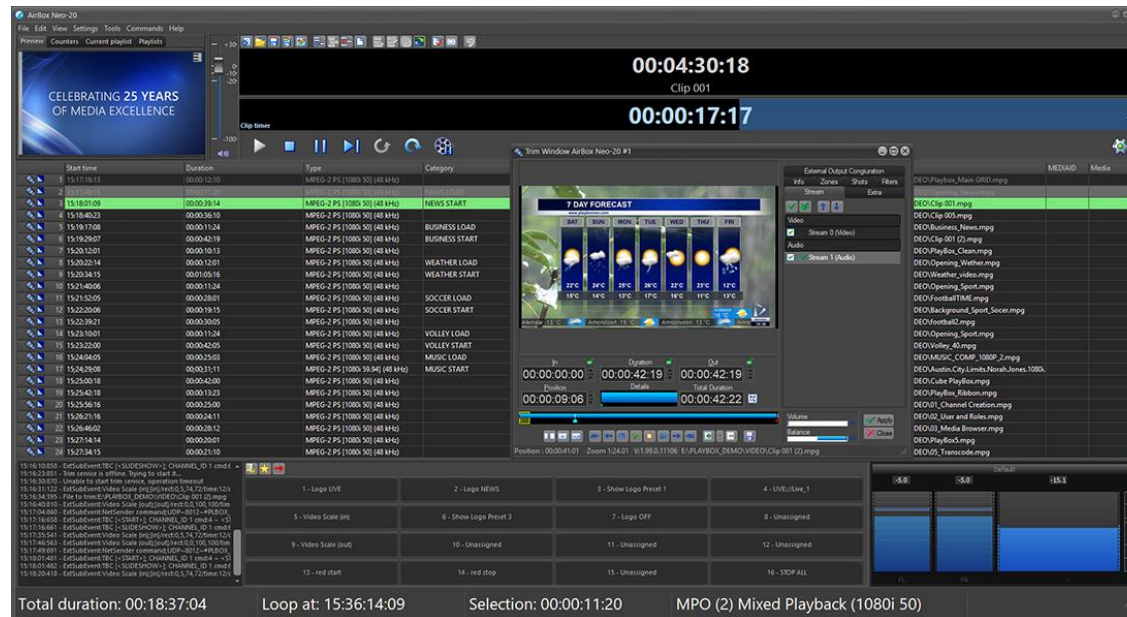
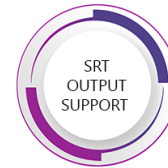
Proven Solutions

- International Broadcasters
- Regional Broadcasters
- Satellite Broadcasters
- Voting & Gaming Channels – SMS2TV
- Scalable TV Channels
- Thematic TV Channels
- Corporate TV Channels
- Single and Multi-Channel Time Delay
- Start-Up TV Channels
- Transition to Digital Channels
- Disaster Recovery Channels
- Free Ad-Supported Channels
- Tapeless Broadcasters
- IPTV Playout Centers
- National Broadcasters
- Local Broadcasters
- Up-Link Centers
- TV to Mobile Channels
- Internet TV / Webcasting
- Multi Language Channels
- Multi Subtitle Channels
- Cable TV Channels
- Remote Head-End / Up-Link Playout
- Multi-Channel Playout Centers
- Multi-Channel Advert Replacement
- Interactive Music Channels
- DVB Workflow Solutions

PlayBox Neo – Broadcast & Media Automation Products

- Playout – **AirBox Neo**
- Interactive Graphics – **TitleBox Neo**
- Live Ingest – **Ingest**
- Media Platform – **PlayBox Neo Suite**
- Live Media Delivery and Distribution - **Media Gateway**
- Time Delay – **TS Time Delay**
- Production Playout – **ProductionAirBox Neo**
- Remote control – **Multi Playout Manager**
- DVB Subtitle Server – **DVB Subtitle Server Neo**
- Playlist Preparation – **ListBox Neo**
- Content Management – **DataBox Neo**
- Automated Media Management – **SafeBox Neo**

Playout - AirBox Neo



AirBox Neo provides automated content streaming and broadcast playout for any kind of TV channel – cloud-based, satellite, cable head-ends, over-the-air broadcasters, corporate TV, internet-based TV, etc. Via its scalable, extremely robust and reliable playout engine, AirBox Neo can easily mix a variety of media files and live inputs in one playlist. It also provides multiple SDI/IP streaming outputs simultaneously in different video standards up to 4K.

[Learn more](#)

Interactive Graphics - TitleBox Neo

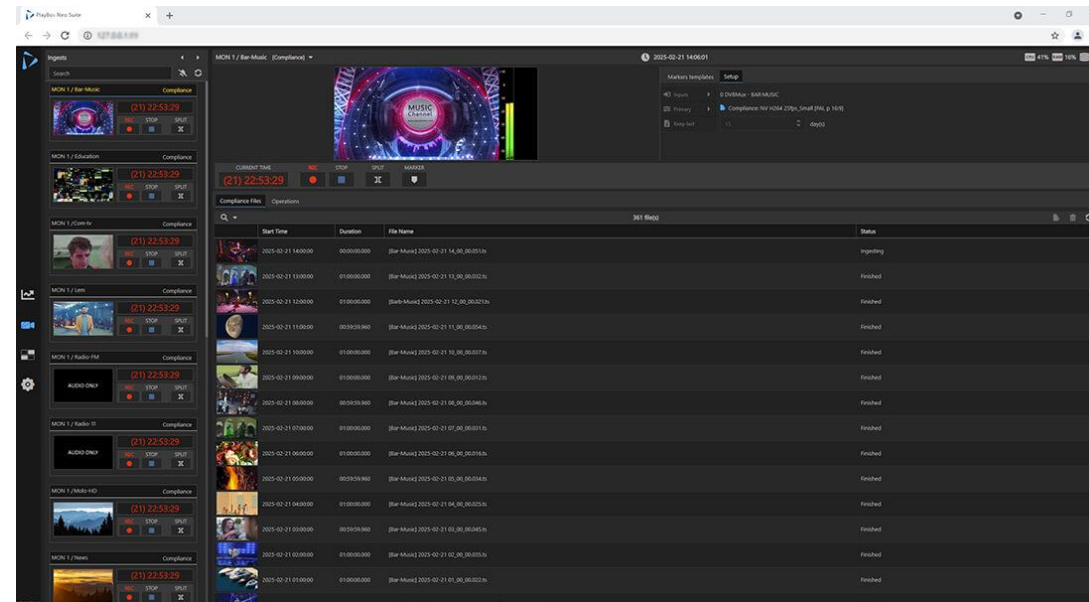


TitleBox Neo is a fully interactive 4k UHD/HD/SD Character Generator, which is suitable for broadcast & cable TVs, info-channels for hotels, schools, corporations, retail businesses, shopping malls, churches, airports, holiday resorts, theme parks, etc.

Unlimited layering like Still text, Roll/Crawl; Logos, Animation image sequence; clocks, countdowns, timers; 2D objects, DVE, In/Out Transitions, Pictures & Banners; Video Objects Playback and etc. all mixed and blended in real time.

[Learn more](#)

Ingest

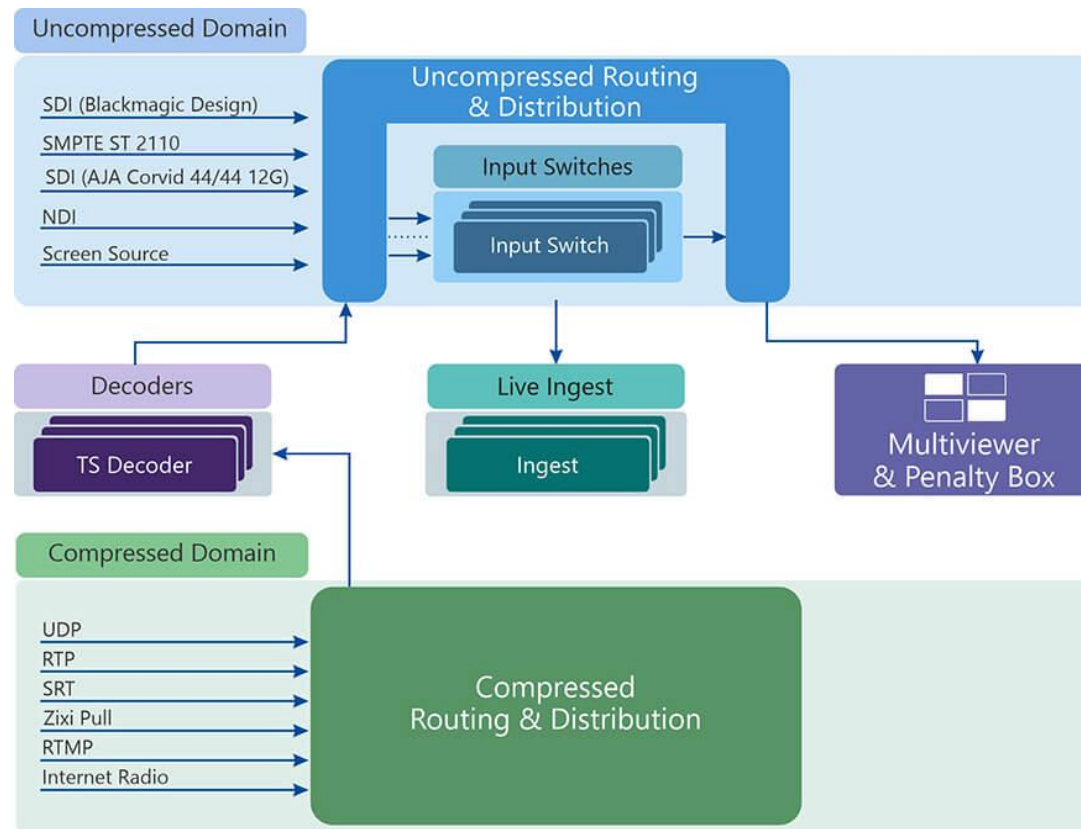


In an attempt to ensure a rich viewer experience, broadcasters and post-production houses have to deal with receiving content from multiple live sources on a daily basis.

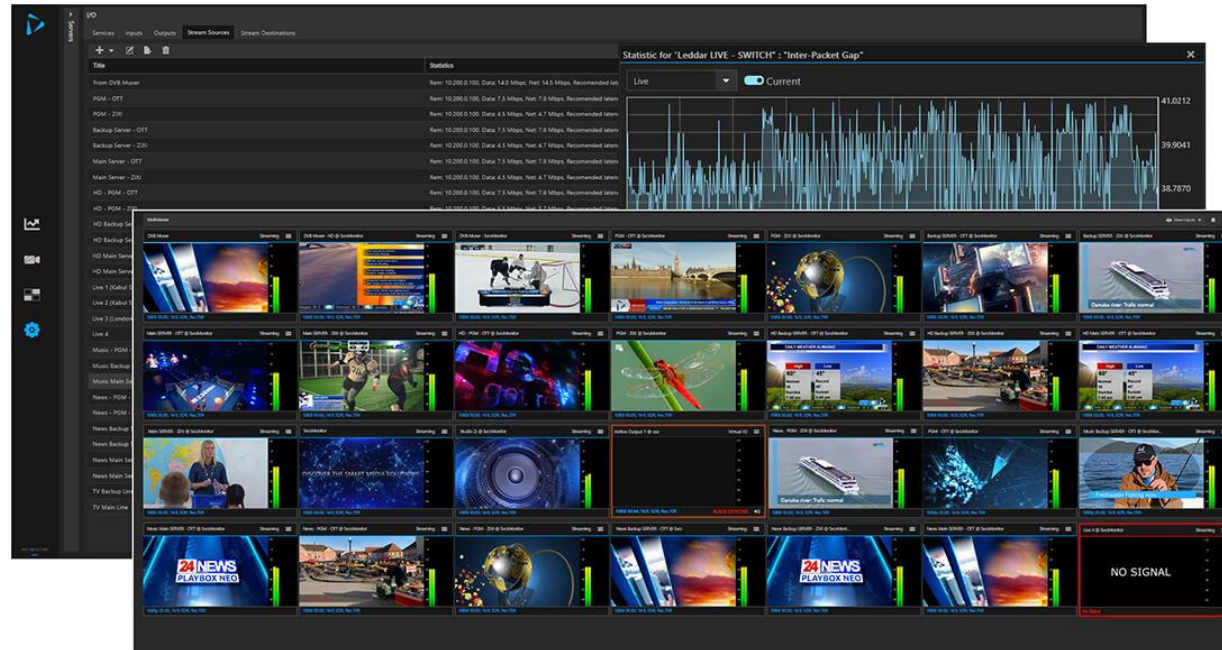
The Ingest application of PlayBox Neo Suite is a multi-channel – multi-server UHD/HD/SD live ingest solution that integrates into the production workflow of any television network, post-production facility or playout center.

[Learn more](#)

Ingest – Workflow



PlayBox Neo Suite

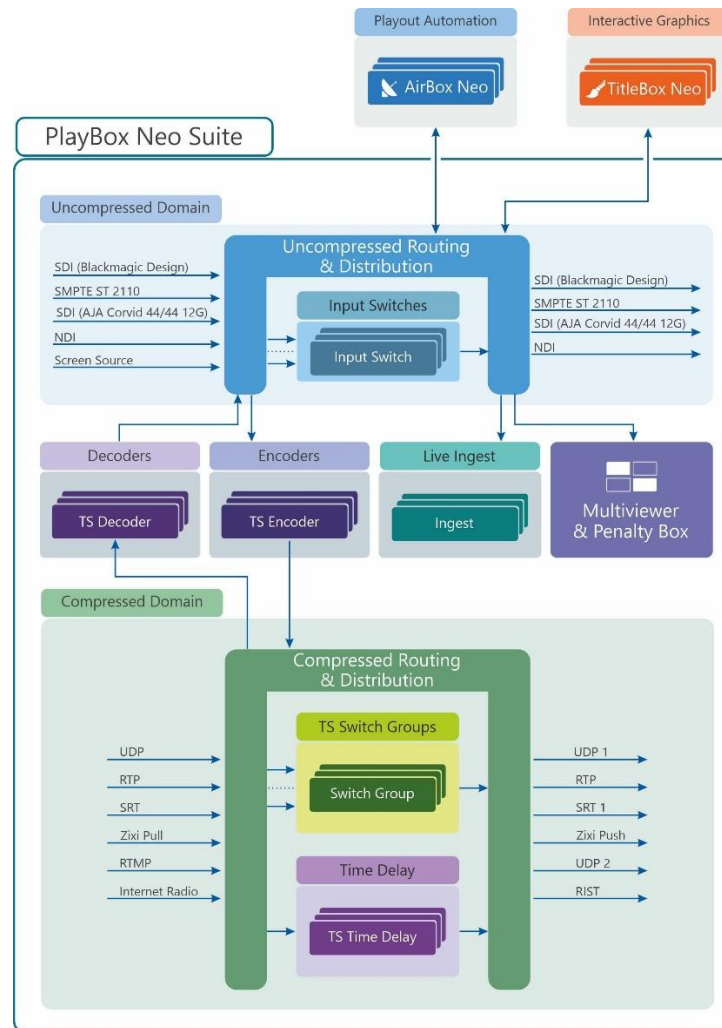


PlayBox Neo Suite is the newest addition to our range of smart media innovations. The platform is an extensive suite of solutions designed to streamline and enhance the workflows of modern media organizations, including TV channels, satellite operators, content creators and OTTs.

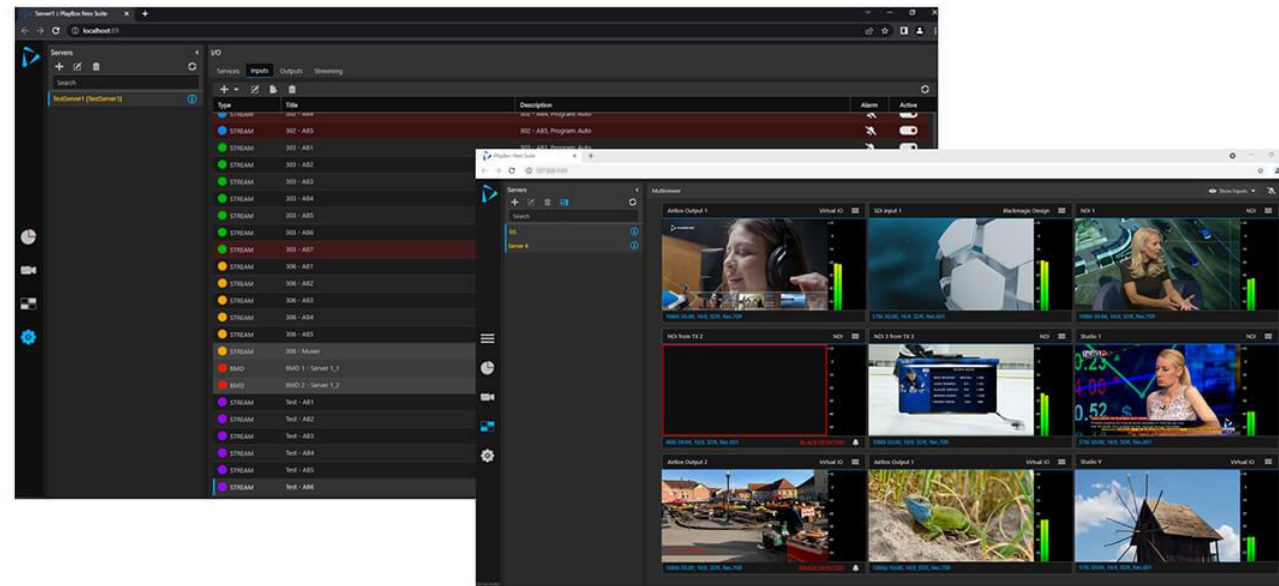
PlayBox Neo Suite is a professional media platform – providing a focal point for any modern media, allowing effortless centralised control, monitoring, and administration of an optimised multimedia workflow. The current line of “Channel in a Box” products integrates seamlessly with PlayBox Neo Suite to get the most from your previous investment and to offer a unified interface for future updates to a completely homogeneous ecosystem.

[Learn more](#)

PlayBox Neo Suite – Workflow



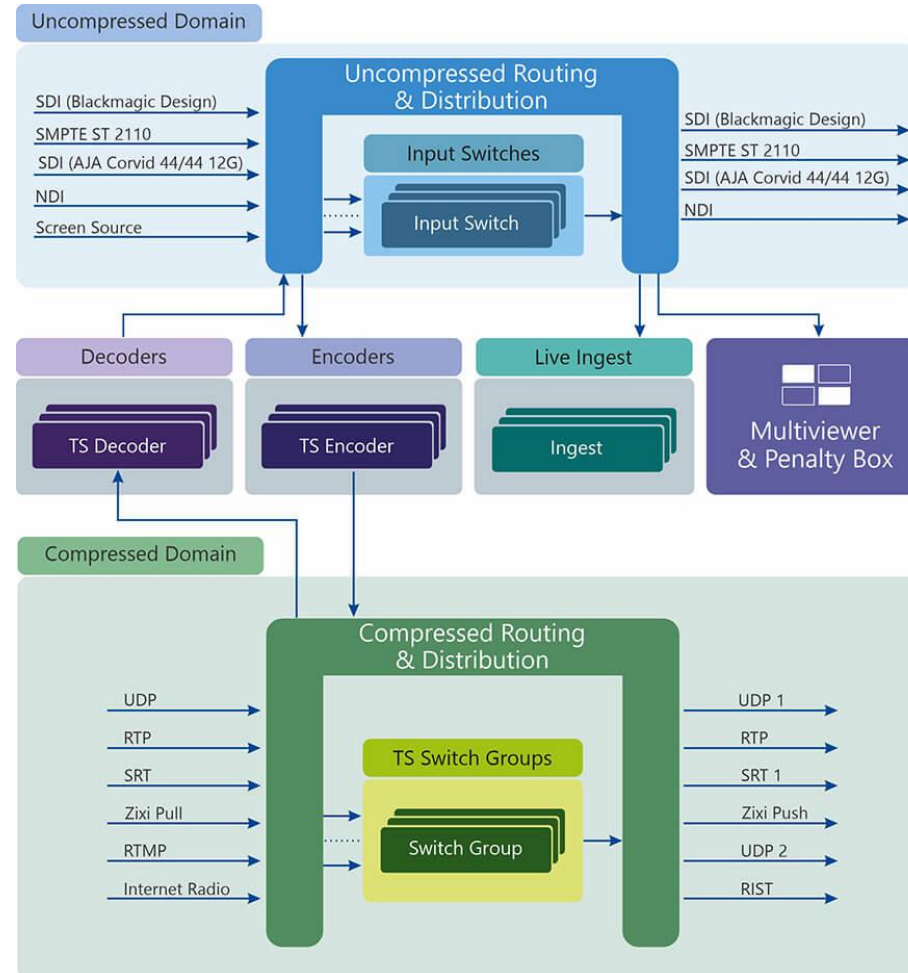
Media Gateway



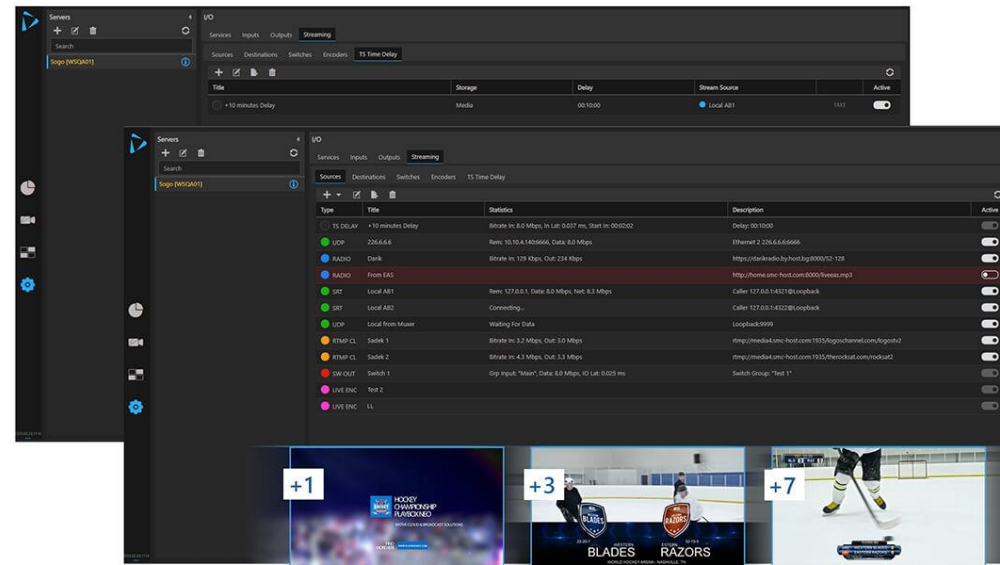
Media Gateway is a live media delivery and distribution solution based on the PlayBox Neo Suite platform. It can be installed on-premises or in the cloud. Media Gateway allows the reception, transmission and conversion of a wide range of broadcast signals to simplify the everyday tasks of content delivery and distribution. Signals can be sourced from and converted to SDI, NDI, SRT, UDP or RTP. Media Gateway also has a Screen input which allows video and audio content to be grabbed from a desktop and delivered as live feed.

[Learn more](#)

Media Gateway – Workflow

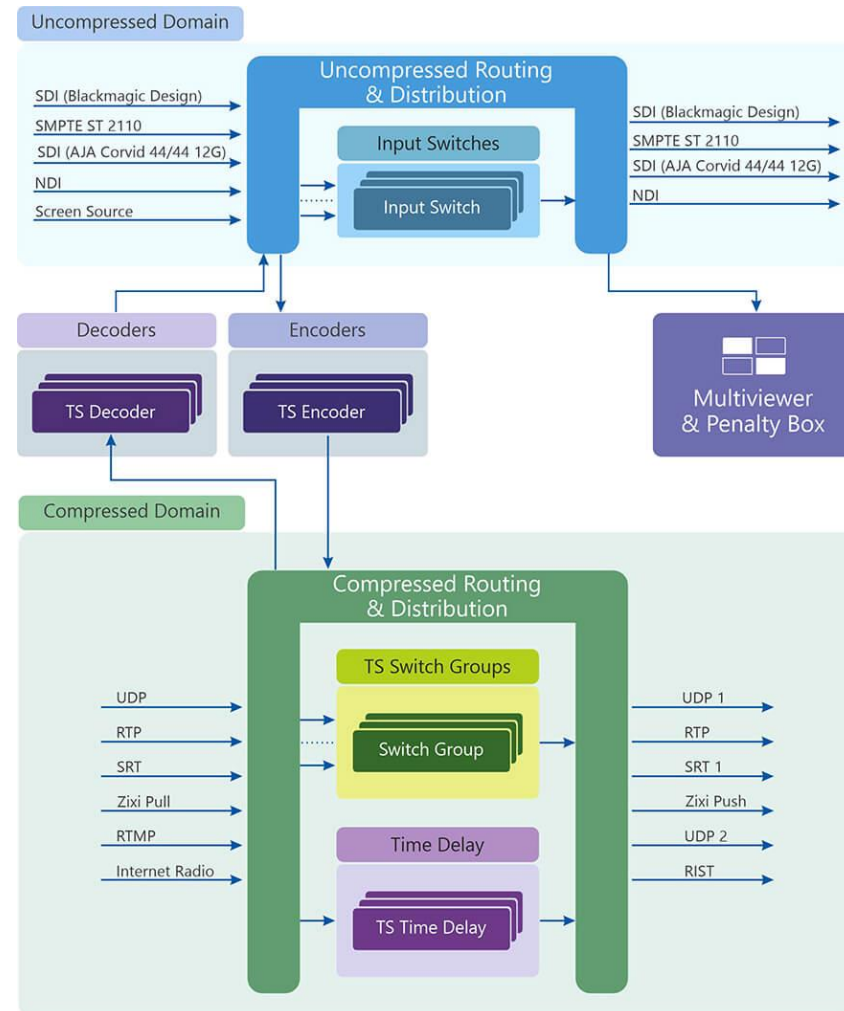


Time Delay - TS Time Delay

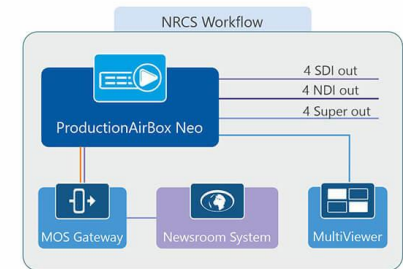
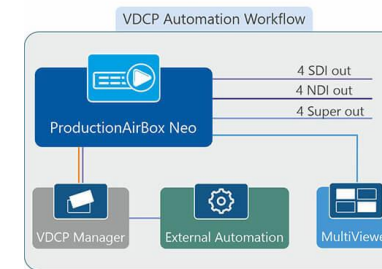
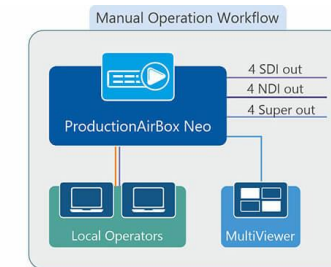
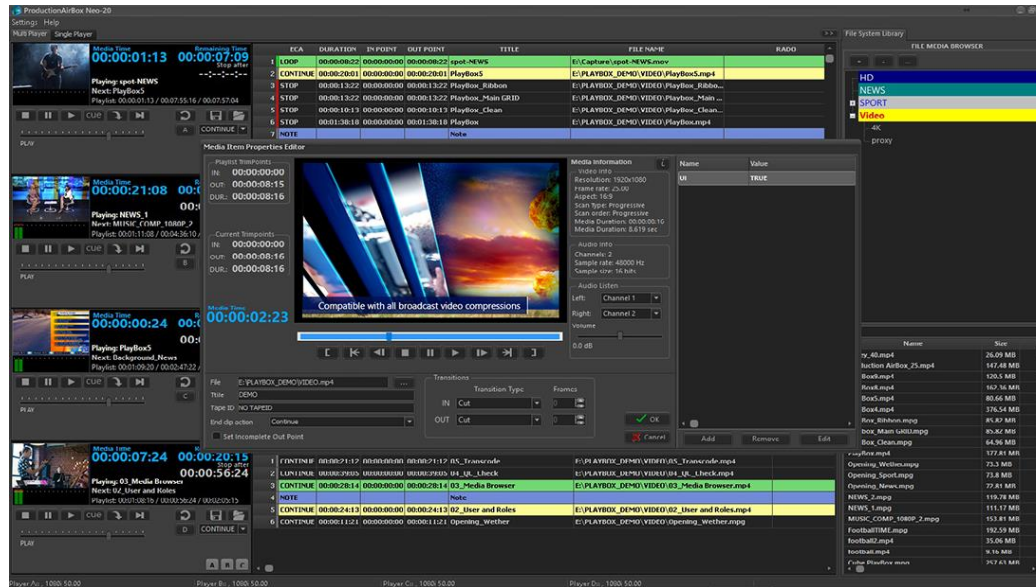


PlayBox Neo TS Time Delay is a Transport stream Delay module for Time Zone Delays, Regional Delays and Disaster Recovery applications. Using PlayBox Neo Suite infrastructure TS Time Delay can take input from any of the supported stream types and can delay the signal as much as it is needed starting from 1 second to days, week or months. After delaying the output can be sent through different protocols as a Transport stream. TS Time delay is transparent to the transport stream and keeps all the information received. PlayBox Neo Suite's stream switch group functionality can be used to do an emergency switch of one or multiple streams simultaneously. Switching can happen manually or automatically. Using built-in decoders and encoders it can also transcode the output stream to other video, audio codec or change the video resolution, framerate, etc. [Learn more](#)

TS Time Delay – Workflow



Production Playout - ProductionAirBox Neo

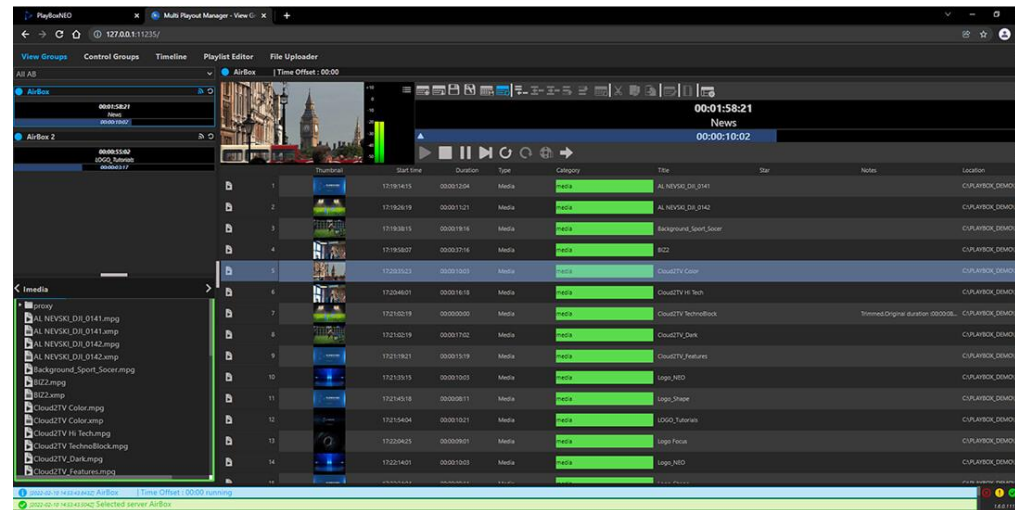


Instant Multi-Channel Playout for news, live shows, live production broadcasts, studio screens and video walls. ProductionAirBox Neo is designed to meet the high-reliability requirements of broadcast playout.

For live productions, any changes to the playlist during on-air sessions are possible!

[Learn more](#)

Remote Control & Monitoring - Multi Playout Manager



Multi Playout Manager (MPM) is a network workflow solution created for multi-channel playout centers to monitor and control all channels locally and assign full or restricted user rights for any of the TV channels to one or more people to remotely monitor, control and view the TV channels from PC or Mobile Device.

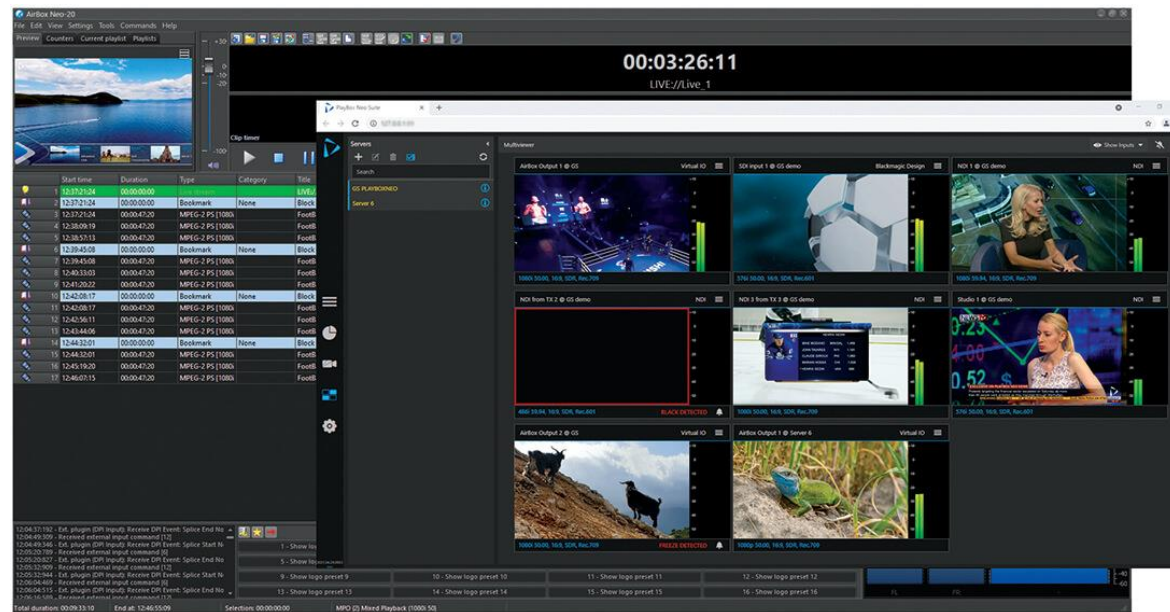
MPM allows multiple operators with sufficient rights to monitor, control and view one or multiple channels schedules, programmes, media files and etc. and to even make live changes to the output when needed. MPM can be used in a simple or complex network infrastructure complete with full redundant operation when required.

[Learn more](#)

PlayBox Neo Solutions

- Playout and Channel branding product suite - [Channel-in-a-Box](#)
- Ad Insertion – [AdBox Neo](#)
- Cloud Solutions – [Cloud2TV](#)

Channel-in-a-Box



World's best-selling playout and channel branding product solution

Powerful, flexible and cost effective, PlayBox Neo has integrated solutions for playout, graphics, news, automation, asset management and disaster recovery. PlayBox Neo Channel-in-a-Box is a turnkey playout server solution for broadcasting a single or multi-TV channel available in both HD or UHD.

[Learn more](#)

Channel-in-a-Box Workflow

Basic Components Scheme



Ad Insertion – AdBox Neo



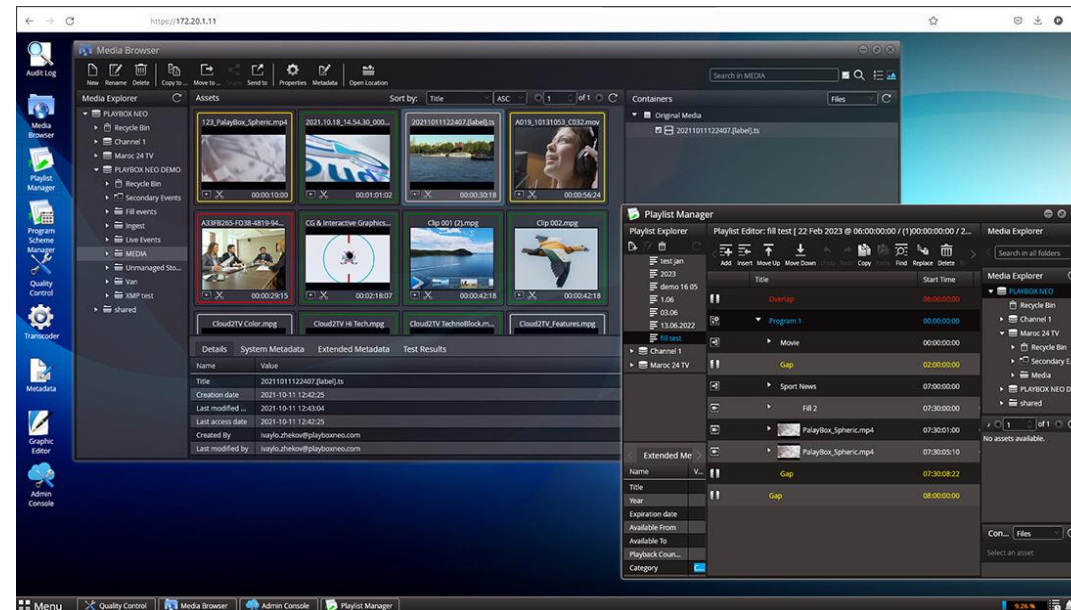
Basic Components Scheme



AdBox Neo enables content owners to maximise their business potential by targeting advertisements for specific audiences with ad insertion and Digital Program Insertion (DPI) in both SD, HD & UHD, in either SDI or DVB (IP).

[Learn more](#)

Cloud Solutions – Cloud2TV

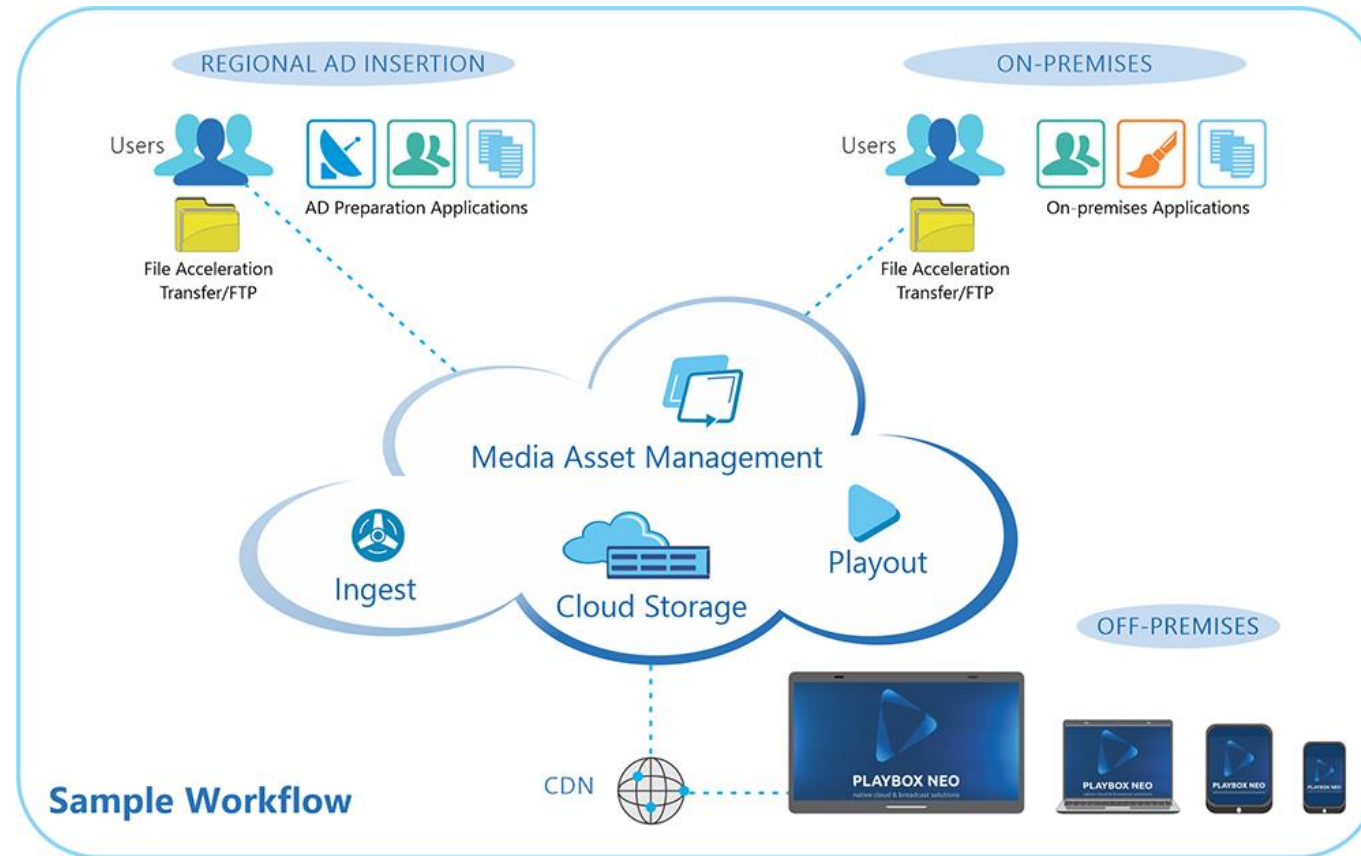


Media Cloud for Any Scale

Cloud2TV is based on the concept of virtual channel playout and is totally software-centric - the future of video production and content delivery, providing TV operators with ultimate simplicity, efficiency and agility.

[Learn more](#)

Cloud2TV Workflow



24/7 Support



PlayBox Neo Ltd. offers Technical Support and round-the-clock, reliable Customer Care.

Global Customer Care Centre can be reached conveniently via Live Chat, E-mail or Phone.

[Learn more](#)

PlayBox Neo – Contact Information

PlayBox Neo Commercial HQ
Tel. +359 2 423 79 11
e-mail: sales@playboxneo.com

PlayBox Neo R&D Centre
Tel. +359 2 423 79 11
e-mail: rnd@playboxneo.com

PlayBox Neo Asia Pacific
Tel. +65 9004 5217
e-mail: sales.asia@playboxneo.com

PlayBox Neo India
Tel: +91 98182 89922
e-mail: sales.india@playboxneo.com

PlayBox Neo Latin America
e-mail: sales.la@playboxneo.com

PlayBox Neo ME
Tel. +359 2 423 79 11
e-mail: sales.me@playboxneo.com

PlayBox Neo UK
e-mail: sales.uk@playboxneo.com

PlayBox Neo USA
Tel. + 1 404 734 7529, Toll Free +1 844 611 4444
e-mail: sales.usa@playboxneo.com